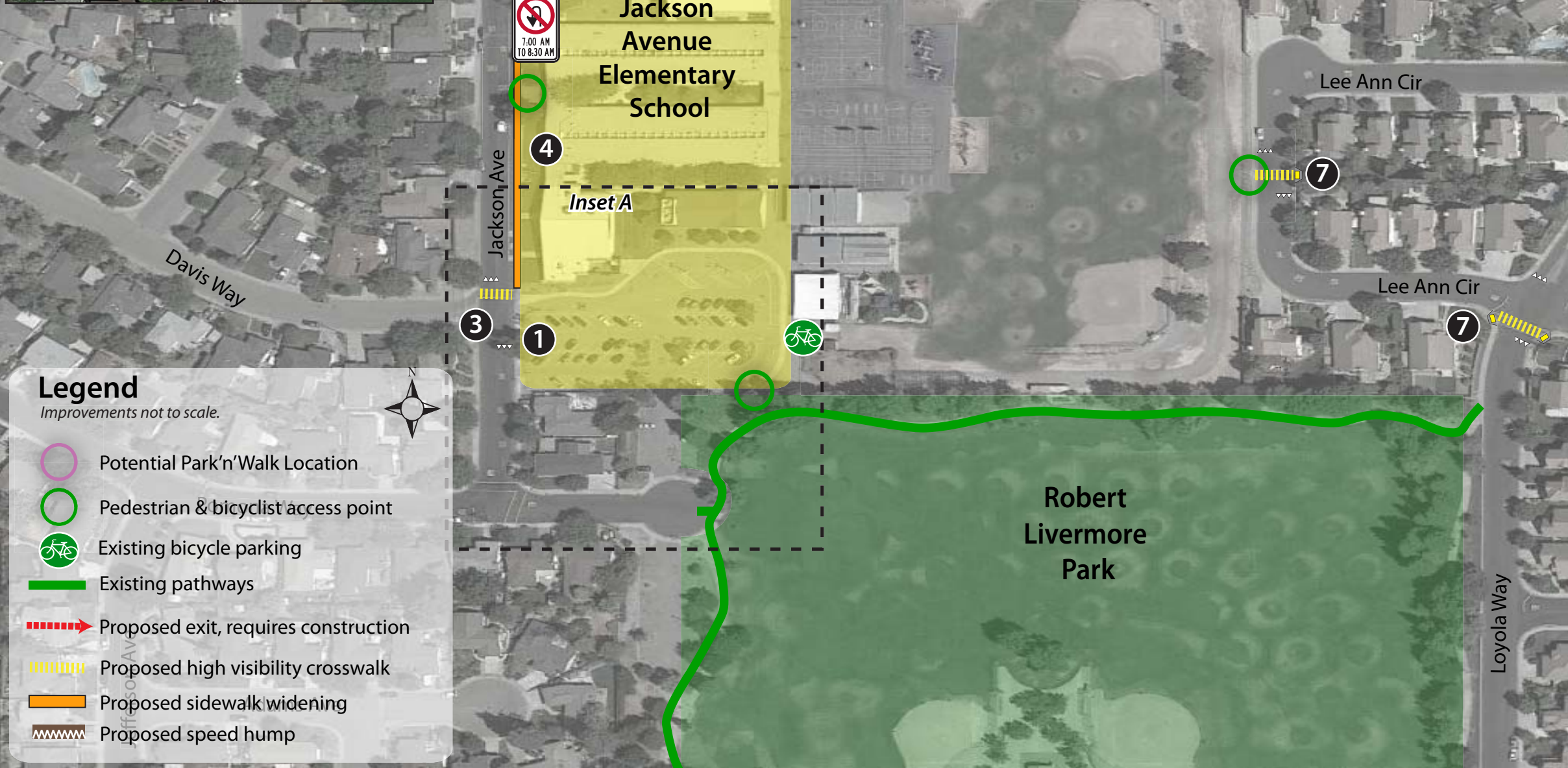
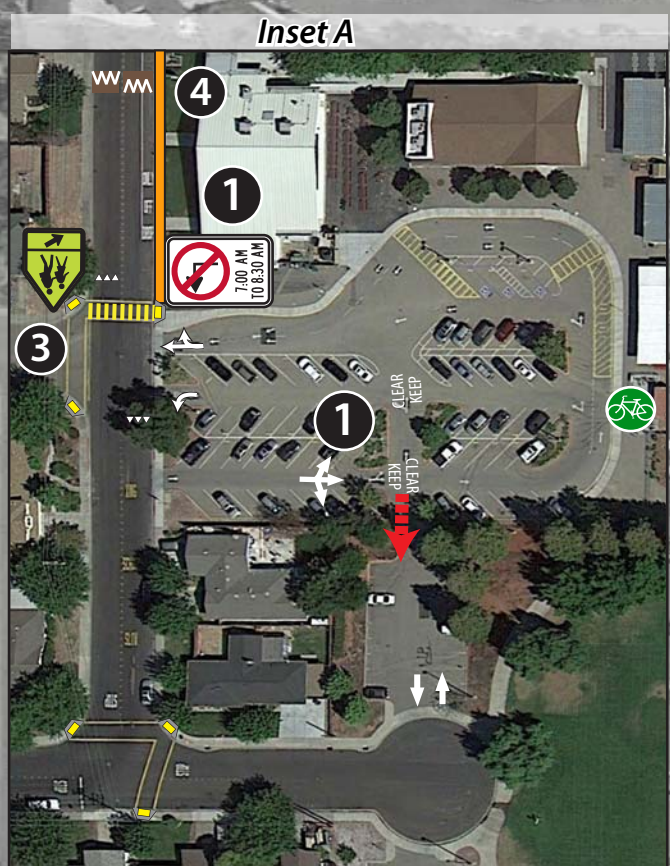


# Jackson Avenue Elementary Safe Routes to School Improvement Plan

Site Assessment held on May 28, 2014



**Legend**  
Improvements not to scale.

- Potential Park'n'Walk Location
- Pedestrian & bicyclist access point
- Existing bicycle parking
- Existing pathways
- Proposed exit, requires construction
- Proposed high visibility crosswalk
- Proposed sidewalk widening
- Proposed speed hump

- 1 Parking Lot**
  - Reconfigure parking lot to separate drop-off lanes from circulation lanes & parking aisles, remove conflicting turning directions for vehicles, and consider converting the Pomona Way parking lot access point to two-way traffic.
  - Install STOP sign at parking lot exit onto Jackson Avenue (currently pavement stencil only).
  - Reconfigure exit driveways onto Jackson Avenue so middle driveway allows only left turns and northern driveway allows only straight ahead and right turn movements.
- 2 Jackson Avenue Loading Zone**
  - Install No U-turn signs on the east side of Jackson Avenue along loading zone.
- 3 Jackson Avenue at Davis Way**
  - Upgrade yellow transverse crosswalk across Jackson Avenue to yellow high visibility crosswalk, stripe advance yield markings.
  - Trim landscaping that currently blocks the Assembly B School Crossing sign on the west side of Jackson Avenue, add W16-7P downward arrow signage to Assembly B sign.
- 4 Jackson Avenue**
  - Consider speed humps in both directions to slow down traffic.
  - Study sidewalk widening along the school frontage.
- 5 Jackson Avenue at Loyola Way**
  - Upgrade yellow transverse crosswalk across Jackson Avenue to yellow high visibility crosswalk, stripe advance yield markings.
- 6 Loyola Way Drop-off Circle**
  - Restripe early Kindergarten drop-off circle on Loyola Way.
- 7 Loyola Way**
  - Upgrade yellow transverse crosswalks at uncontrolled locations on Loyola Way & Lee Ann Cir to yellow high visibility crosswalks, stripe advance yield markings, construct curb ramps where missing.
  - Designate the north side of Loyola Way, between Phyllis Ct and the Beverly St pathway, as a park'n'walk location.
- 8 All Intersections**
  - Install ADA-compliant truncated domes, where missing, on all curb ramps.
- 9 Programmatic Recommendations**
  - Establish formal Park & Walk locations.
  - Develop Circulation Plan to send home with all students at the beginning of each school year outlining drop-off/pick-up rules, location of Park & Walk sites, and pedestrian/bicycle access points and safety tips.
  - Relocate school signs to be adjacent to curb, where sidewalk width permits.